



BOSCH

Invented for life

Integrated Security Solutions

B and G Series Control Panels



Table of contents

Control Panels	3
Keypads	7
Communication Modules	13
Power	18
I/O Expanders	19
Door Control	23
Home Automation	24
RF Receivers	25
Detectors	27

Our integrated security solutions address the challenges you face every day. Intelligent control panels with more power and more capacity. Advanced communications solutions for flexibility and reliability. Keypads that are easier to use. Innovative detectors with superior false alarm immunity and catch performance. Combination intrusion and fire, access, IP video, and smart home integration all with one panel. Bosch provides the tools you need to create superior solutions for your customers.



Control Panels

Bosch offers a wide range of control panels to provide the right solution for any application, small or large.

Bosch B Series and G Series include advanced features such as:

- ▶ On-board Ethernet port with IPv4 and IPv6 compatibility for IP alarm communication and remote programming
- ▶ On-board USB means easy on-site RPS programming
- ▶ Plug-in PSTN and cellular communication modules allow for simple installation and future-proof upgrades
- ▶ Notifications via email and text message
- ▶ System operation from an iOS or Android device with the Remote Security Control app
- ▶ IP video integration to support up to 16 Bosch IP surveillance cameras
- ▶ Bilingual user interface with multiple language support

B Series

B3512



B4512



B5512



B6512



G Series

B8512G



B9512G



Points (total/wireless)	8/8	28/20	48/40	96/88	99/91	599/504
Areas	1	2	4	6	8	32
Point profiles	20	20	20	20	31	63
Users	10 + service	32 + service	50 + service	100 + service	500 + service	2,000 + service
Doors	–	–	–	4	8	32
Supervised	4	8	8	12	16	32
IP cameras	–	2	4	6	8	16
Outputs	3	27	43	91	99	599
Custom functions	1	2	4	6	8	32
Log events	128	128	256	1000	2,048	10,192
SKEDS	1	5	5	10	40	80
Fire	Residential	Residential	Residential	Residential	Residential/ commercial	Residential/ commercial



B Series

B Series Control Panels are the most advanced solutions available for small to mid-sized applications with support for up to 96 Points, 6 Areas, and 100 Users.



- ▶ Use Bosch IP camera integration video motion detection to activate points on the panel, triggering camera actions such as sending video snapshots via email
- ▶ Supports a full range of intrusion detectors and RADION wireless
- ▶ Certified for residential fire applications
- ▶ Integrates with wireless smart home devices—such as lighting controls, door locks, and temperature sensors—for home automation and remote monitoring



G Series

G Series Control Panels are approved for combination burglar and fire alarm applications and offer integrated access control and IP video integration. It supports up to 32 doors of access control, 599 points of burglary and fire protection, and 2,000 users.



- ▶ Compatibility with legacy peripherals allows you to easily and cost-effectively upgrade existing GV3 and GV4 systems
- ▶ Supports a full range of intrusion detectors and RADION wireless
- ▶ Advanced features such as Area Re-Arm and Monitor Delay ensure sensitive areas are secured, even when the system is turned off
- ▶ Integrates with wireless smart home devices—such as lighting controls, door locks, and temperature sensors—for automation and remote monitoring

Keypads

Choose from standard LCD keypads, a color graphical LCD touch screen or ATM-style keypads. Models are also available for fire alarm applications.

Bosch keypads feature:

- ▶ Highly-visible status indicators
- ▶ User-adjustable options such as volume and brightness
- ▶ Simple menu-style user interface
- ▶ Dedicated function buttons for common commands, including status indication
- ▶ Simple installation with self-locking base and chassis, lift-gate terminal strips, and built-in bubble level
- ▶ Audible tones from the keypad sounder alert personnel to fire events and assist fire fighters in locating the keypad

Touch Screen	2-line Capacitive	2-line Standard	5-line ATM	2-line Standard	2-line Fire	2-line Fire
B942	B921C	B920	B930	B915	B925F	B926F



Intrusion function keys	Menu	■	■	—	—	■	—
Fire function keys	—	—	—	—	—	■	—
Indicators: all/part on	■/—	■/—	■/—	■/—	■/—	■/ ■	■/—
— Ready	■	■	■	■	■	■	■
Trouble	■	■	■	■	■	■	■
Power	■	■	■	■	■	■	■
Gas alarm	■	■	■	■	■	■	■
Fire alarm	—	—	—	—	—	■	■
Silenced alarm	—	—	—	—	—	■	■
Supervision error	—	—	—	—	—	■	■
Audible tones	■	■	■	■	■	■	■
On-screen help	■	■	■	■	—	—	—
Inputs/outputs	4/1	4/—	—/—	—/—	—/—	—/—	—/—
125 kHz EM Prox Reader	■	—	—	—	—	—	—

B942/B942W Touch Screen Keypad



- ▶ Features an illuminated touch screen and graphical interface
 - ▶ Elegant design and low profile fits with any modern decor
 - ▶ Shows system messages for all areas
 - ▶ Built-in presence detector lights the display when user approaches keypad
 - ▶ Built-in proximity reader allows use of a token or card as replacement for a passcode, or for use with dual authentication for high-security areas
 - ▶ Four inputs and one output provide cost-effective expansion
- 2015 GOOD DESIGN™ Award Winner, Electronics



B920 Two-line Alphanumeric Keypad



- ▶ Two-line LCD display with up to 32 character point, user, and area names
- ▶ Shows two-line system messages for all areas
- ▶ Simple menu-style user interface
- ▶ Dedicated function buttons
- ▶ Situation-sensitive on-screen help

B921C Capacitive Keypad with Inputs



- ▶ Features capacitive touch keys, which are more resistant to wear than traditional buttons
- ▶ Smooth, sleek surface is easy to clean and fits with any modern decor
- ▶ Shows two-line system messages for all areas
- ▶ Simple menu-style user interface
- ▶ Situation-sensitive on-screen help
- ▶ Four inputs provide simple, lower-cost point expansion

B930 ATM Style Alphanumeric Keypad



- ▶ Five-line ATM-style LCD display with up to 32 character point, user, and area names
- ▶ Shows system messages for all areas
- ▶ Simple menu-style user interface
- ▶ Programmable keypad shortcuts
- ▶ Situation-sensitive on-screen help for easy operation

B915 Basic Keypad



- ▶ Two-line LCD display with up to 18 character point, user, and area names
- ▶ Shows two-line system messages for all areas

B925F and B926F Fire Keypad



- ▶ Fully-supervised devices for fire (B926F) and combined fire/intrusion (B925F) applications
- ▶ ACK, SILENCE, RESET and DRILL function keys
- ▶ Two-line LCD display with up to 32 character point, user, and area names
- ▶ Simple menu-style user interface
- ▶ Distinct sounder tones to alert you to a fire alarm, a fire trouble, or fire supervisory events as they occur

Legacy Keypads



The G Series panel supports a variety of legacy Bosch SDI keypads, including:

- ▶ D1255 Series VFD Keypads
- ▶ D1260 Series LCD Keypads
- ▶ D1256RB Fire Keypad
- ▶ D1257RB Remote Fire Annunciator

Communication Modules

Plug-in communication modules simplify communication and allow for simple installation and future-proof upgrades.

Use an Ethernet or cellular data network (4G LTE or GSM/GPRS) to transmit reports to the central station receiver, connect to the Remote Security Control app, or for remote configuration and service using Remote Programming Software (RPS).

Both Modem4 and Contact ID formats are supported over telephone and Conettix IP communication channels.

Cellular Network Compatibility

A Conettix plug-in communicator is required for cellular communication with the control panel. Multiple models are available for selecting the network with the best coverage at the customer site.

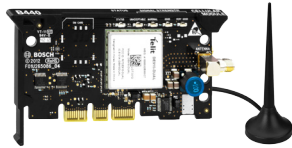
Carrier	Protocol	B444, B444-C*	B443-ATT**	B443-ROG**	B443-TMO**
Verizon	4G (LTE)	■	—	—	—
AT&T	HSPA+ / GPRS (GSM)	—	■	—	—
Rogers	HSPA+ / GPRS (GSM)	—	—	■	—
T-Mobile	HSPA+ / GPRS (GSM)	—	—	—	■

* -C denotes devices that are not pre-provisioned to an account

** Also available without a SIM card (B443)

B44x Connetix Plug-in Cellular Communicator

Enables secure two-way IP communication over cellular networks. Choose B444 (Verizon 4G LTE) or B443 (AT&T/Rogers/T-Mobile HSPA+).



- ▶ Remote programming and monitoring of compatible panels
- ▶ Personal SMS message and e-mail notification options
- ▶ LED status information and advanced keypad diagnostics

B426 Ethernet Communication Module

Four-wire powered SDI2 bus device that provides two-way communication over IPv4 or IPv6 Ethernet networks.



- ▶ Full two-way IP event reporting
- ▶ 10/100 Base-T Ethernet communication
- ▶ NIST–FIPS197 Certified for 128-bit to 256-bit encryption
- ▶ Plug and Play installation, including UPnP service to enable remote programming behind firewalls
- ▶ Advanced configuration by browser or RPS

B450 Connetix Plug-in Communicator Interface

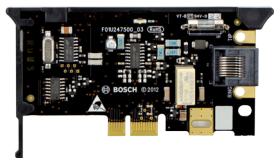
Four-wire powered SDI2, SDI, or option bus device that provides two-way communication over commercial cellular networks using a Plug-in Cellular Communicator (available separately).



- ▶ Full two-way IP communication
- ▶ Plug and Play installation
- ▶ Supports remote installation of cellular modules for improved signal

B430 Plug-in Telephone Communicator

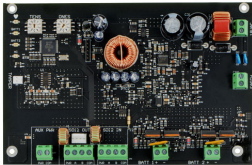
Provides communication over the Public Switched Telephone Network (PSTN) by connecting the PSTN to the control panel. Provides a single telephone line with RJ-31 connection for reports to the central station receiver and for remote programming.



- ▶ Configured directly from RPS or a keypad, eliminating the need for separate configuration
- ▶ Easily installs into the control panel's on-board plug-in module connector

Power

B520 Auxiliary Power Supply Module



- ▶ Provides auxiliary power to 12 VDC devices or to SDI2 modules.
- ▶ Provides up to 2 A of 12 V standby current for Fire or Burglar Applications (4 A of Burglary alarm current)
- ▶ Supervises up to two 12 V 7-18 Ah batteries independently for up to 36 Ah of capacity
- ▶ Provides up to 80 hours of standby time
- ▶ Uses the Bosch standard TR1850 plug-in transformer
- ▶ Easy-to-read switch addressing
- ▶ Interconnect wiring connection

I/O Expanders

Hardware and wireless expansion options provide a variety of ways to customize the system to your needs.

New expansion modules can be mounted up to 1,000 feet away from the panel for added installation flexibility.

Any combination of hardwire, addressable and wireless expansion is possible to meet application requirements.

B208 Octo-input Module

An 8 point expansion SDI2 device, this module is fully supervised and communicates all point status changes back to the control panel. The module's expansion points operate the same as the points on the control.



- ▶ Programmable input point functions
- ▶ Easy-to-read switch addressing
- ▶ Switches allow for ease of use in device addressing
- ▶ Interconnect wiring connectors for easy installation

B308 Octo-input Module

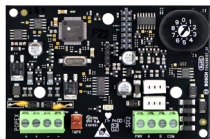
For applications requiring Form C outputs to operate auxiliary systems or to display fire system status at remote annunciators. Can interface with building components such as HVAC and door lock releases for complete system control and monitoring.



- ▶ Programmable output functions
- ▶ Easy-to-read switch addressing
- ▶ Provides 8 Form C relays
- ▶ Allows remote control of outputs
- ▶ Interconnect wiring connectors for easy installation

B299 POPEX Module

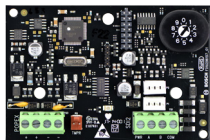
Communicates with control panel over the SDI2 bus. Provides support for up to 100 POPIT (Point Of Protection Input Transponder) devices over a single expansion loop using two pairs of terminals.



- ▶ Provides point identification for up to 100 connected addressable initiating devices using POPITs
- ▶ Supervises wiring to devices for circuit integrity
- ▶ Expands the number of points in the system

B600 Retrofit (ZONEX) Module

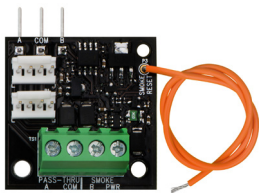
Communicates to the control panel through a proprietary connection and provides support for two ZONEX buses.



- ▶ Provides legacy ZONEX input/output support
- ▶ Includes two ZONEX buses for continued ZONEX support on G Series control panels
- ▶ Compact size and 3-hole mounting footprint for easy installation

B201 2-wire Powered Loop Module

Provides a single, powered initiating device circuit. Supports compatible 12 V 2-wire smoke detectors and burglary devices.



- ▶ Supports B Series panels
- ▶ Supports up to 20 compatible smoke detectors
- ▶ Resets latching devices from the control panel
- ▶ Connects to the control panel terminal block with easy-to-install integrated pins
- ▶ Use with a D132A Smoke Detector Reversing Relay Module for smoke detectors with integrated sounders

D125B Dual Class B Initiating Module

Provides two separate NFPA Class B (Style B) powered detector loops. Supports compatible 12V or 24V 2-wire and 4-wire detectors. Suitable for connecting fire or burglary devices in commercial, industrial, and institutional applications.

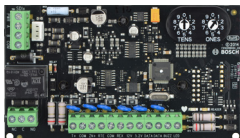


- ▶ Supports G Series and B Series panels
- ▶ Supports up to 50 two-wire 12 VDC glass break detectors
- ▶ Reports individual loop alarm, individual loop trouble, and ground fault
- ▶ Manually resets latching devices from panel or central station

Door Control

Allows access control integration for compatible Bosch control panels. Authority for access is controlled by the user level, the group of the user, the time of day, the door state, and the area armed state. Control each authority restriction through automatic and manual functions.

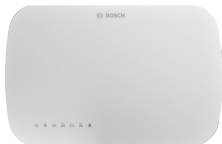
B901 Access Control Interface Module



Home Automation

Using a Home Control Gateway, B Series and G Series panels can use Z-Wave and Wi-Fi devices to create smart, connected systems that control security, lighting, heating, cooling, and more—all customized for your home or business.

G450 Home Control Gateway



- ▶ Compatible with a wide range of wireless devices
- ▶ Expandable applications
- ▶ Easy-to-use dashboard, web-based and mobile app interface
- ▶ Advanced energy metering capabilities



RF Receivers

Our range of wireless devices integrates with our control panels to provide secure, scalable solutions for any application.

B810 RADION receiver SD

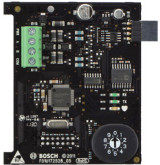
Supports supervision of RADION wireless points, keyfobs and repeaters. Advanced RF diagnostics and multiple device enrollment options ensure efficient and effective installation. Synchronized encryption increases immunity to replay attacks, providing reliable system security.



- ▶ 433 MHz frequency improves penetration of signal for superior range and reliability
- ▶ Dual internal antennas for higher reliability
- ▶ Connects to Bosch control panels utilizing SDI2 bus
- ▶ Self-locking enclosure with bubble level for faster installation

B820 SDI2 Inovonics Interface Module

Allows communication between Bosch control panels and an Inovonics EN4200 EchoStream Serial Receiver with EchoStream Wireless transmitters.



- ▶ Install up to 1,000 ft. from the control panel
- ▶ Supports 350 wireless devices (points and keyfobs combined) and 8 repeaters

Detectors

Bosch detectors provide best-in-class false alarm immunity and catch performance while minimizing false alarms. Our intrusion detectors suit the requirements of virtually any application—from larger warehouses to long corridors and high ceilings. They stand up to multiple challenges, including strong drafts, moving objects and the presence of pets.

Bosch detectors include a number of unique design features to help you get the job done up to 25% faster:

- ▶ A self-locking, two piece enclosure with an easy snap-to-close installation and no screws to lose
- ▶ Integrated biaxial bubble level ensures proper alignment
- ▶ Removable, commercial-grade terminal strip prevents incorrect wiring to eliminate future service calls
- ▶ Optics and electronics are sealed behind a protective cover to prevent damage during installation
- ▶ Flexible mounting height makes positioning the detector easy, eliminating the need for on-site adjustments

Blue Line Gen2 Series

ISC-BPR2-
W12



ISC-BPR2-
WP12



ISC-BPQ2-
W12



ISC-BDL2-
W12G



ISC-BDL2-
WP12G



ISC-BDL2-
WP6G



Coverage/range	40 x 40 ft (12 x 12 m)	40 x 40 ft (12 x 12 m)	40 x 40 ft (12 x 12 m)	40 x 40 ft (12 x 12 m)	40 x 40 ft (12 x 12 m)	20 x 20 ft (6 x 6 m)
Type	PIR	PIR	Quad PIR	TriTech	TriTech	TriTech
Pet-friendly	—	■	—	—	■	■
Pet/small animal immunity	10 lb (4.5 kg)	45 lb (20 kg)	10 lb (4.5 kg)	10 lb (4.5 kg)	100 lb (45 kg)	100 lb (45 kg)
Anti-mask	—	—	—	—	—	—
First Step Processing	■	■	■	■	■	■
Microwave Noise Adaptive Processing	—	—	—	■	■	■
Enable/Disable Pet immunity	—	■	—	—	■	■

Commercial Series

ISC-CDL1-W15G



ISC-CDL1-WA15G



ISC-CDL1-WA12G



Coverage/range	50 x 50 ft (15 x 15 m)	50 x 50 ft (15 x 15 m)	40 x 40 ft (12 x 12 m)
Type	TriTech	TriTech	TriTech
Pet-friendly	—	—	—
Pet/small animal immunity	10 lb (4.5 kg)	10 lb (4.5 kg)	10 lb (4.5 kg)
Anti-mask	—	■	■
First Step Processing	■	■	■
Microwave Noise Adaptive Processing	■	■	■
Enable/Disable Pet immunity	—	—	—

Professional Series

	ISC-PPR1-W16	ISC-PPR1-WA16G	ISC-PDL1-W18G	ISC-PDL1-WA18G	ISC-PDL1-WC30G	ISC-PDL1-WAC30G
						
Coverage/range	50 x 70 ft (16 x 21 m) or 25 x 33 ft (8 x 10 m)	50 x 70 ft (16 x 21 m) or 25 x 33 ft (8 x 10 m)	60 x 80 ft (18 x 21 m) or 25 x 33 ft (8 x 10 m)	60 x 80 ft (18 x 21 m) or 25 x 33 ft (8 x 10 m)	100 x 8.5 ft (30 x 2.6 m) or 25 x 3.3 ft (8 x 1 m)	100 x 8.5 ft (30 x 2.6 m) or 25 x 3.3 ft (8 x 1 m)
Type	PIR	PIR	TriTech	TriTech	TriTech	TriTech
Pet-friendly	—	—	—	—	—	—
Pet/small animal immunity	10 lb (4.5 kg)	10 lb (4.5 kg)	10 lb (4.5 kg)	10 lb (4.5 kg)	10 lb (4.5 kg)	10 lb (4.5 kg)
Anti-mask	—	■	—	■	—	■
First Step Processing	■	■	■	■	■	■
Microwave Noise Adaptive Processing	—	—	■	■	■	■
Enable/Disable Pet immunity	—	—	—	—	—	—

A Tradition of Quality and Innovation

For over 125 years, the Bosch name has stood for quality and reliability. Bosch is the global supplier of choice for innovative technology, backed by the highest standards for service and support. Bosch Security Systems proudly offers a wide range of security, safety, communications and sound solutions that are relied upon every day in applications around the world, from government facilities and public venues to businesses, schools and homes.

Bosch Security Systems

To learn more about our product offering,
please visit www.boschsecurity.com

© Bosch Security Systems, 2018
Modifications reserved
BINPK_G-Series_v20180215